

SEC High Resolution Table-top SEM

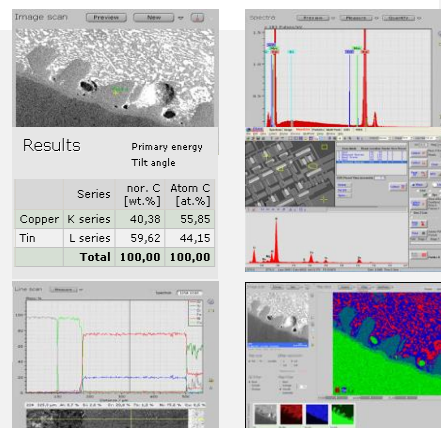
SNE-4500M

- ▶ Resolution: 5.0nm @30kV
- ▶ Max. "Live" Magnification: 100,000x
- ▶ ET-type SE Detector
- ▶ 1kV to 30kV Variable Accelerating Voltage
- ▶ 5-axis Stage (X, Y, Z, R, T)
- ▶ 4-Hole Variable Aperture (30 / 50 / 100 / 200µm)
- ▶ Sample Loading Size: Max. 80mm (Dia.) x 35mm (H)



EDS System

- ▶ Liquid Nitrogen (LN₂) Free SDD Type
- ▶ Elemental Detection: Boron (5) - Americium (95)
- ▶ Spectrum Resolution: < 129 eV (MnK α)
- ▶ Multi-point Analysis / Line Scan / Elemental Mapping
- ▶ SUTW (Super Ultra-Thin Window)



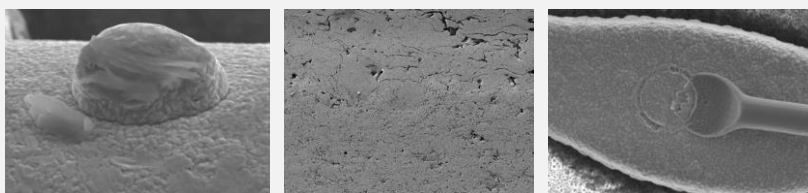
Ion Sputter Coater (MCM-200)

- ▶ Quick and Easy Operation
- ▶ Sample Loading Size: Max. 133mm (Dia.)
- ▶ Target Material: Au (Gold) or Pt (Platinum)
- ▶ 505(W) x 310(D) x 250(H) mm / 15kg



BSE Detector (Solid State-type)

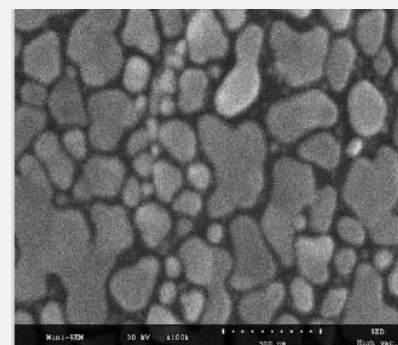
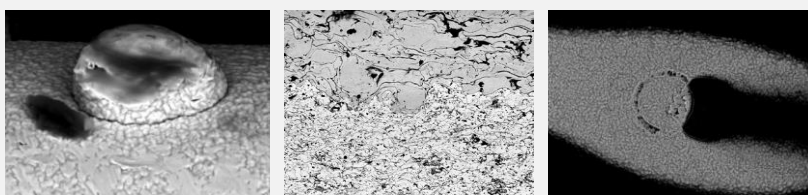
- ▶ SE (Secondary Electron) Image



4-Quadrant Fixed Type (Solid-State) For Composition & Topographic Analysis



- ▶ BSE (Backscattered Electron) Image



Options

- 4-Quadrant Solid State BSE Detector
- Low Vacuum Mode
- Motorized Stage

For more details, please contact:

AlfaTech Services

(New Delhi, Mumbai, Hyderabad)

Tel: +91-11-2544 6275 / 6276

Fax: +91-11-2544 6277

e-mail: alfatech@alfatechservices.com

web: www.alfatechservices.com

